

THE UNIVERSITY OF TEXAS  
SOUTHWESTERN  
TRANSVERSE MYELITIS  
AND  
NEUROMYELITIS OPTICA PROGRAM



Benjamin M. Greenberg, MD, MHS  
Director

# Why We Are All Here

- ▣ To educate
- ▣ To inform
- ▣ To give thanks....

# The Schedule

- ▣ 10:00 am - Welcome and introduction to the conditions
- ▣ 10:45 am - Stuve lab presentation
- ▣ 11:30 am - Monson Lab presentation
- ▣ 12:15 pm - Lunch
- ▣ 1:00 pm - Lana Harder - Cognition and NMO/TM
- ▣ 1:25 pm - Presentation from the TMA (Sandy/Chitra)
- ▣ 1:40 pm - The current and future repository/  
longitudinal studies - Morgan/Sam
- ▣ 2:00 pm - Adjourn

# Overview of Nervous System Anatomy





# The Nervous System: 101

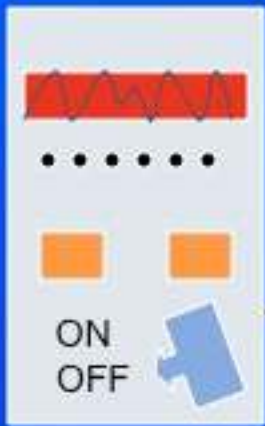


# The Nervous System: 101

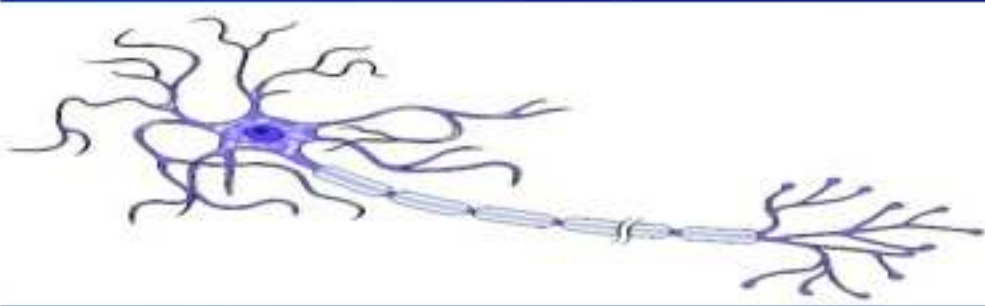
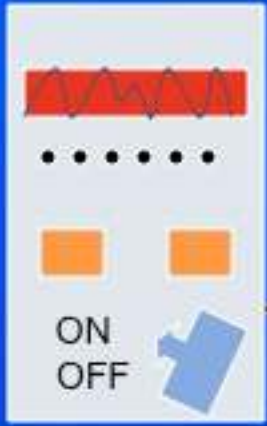


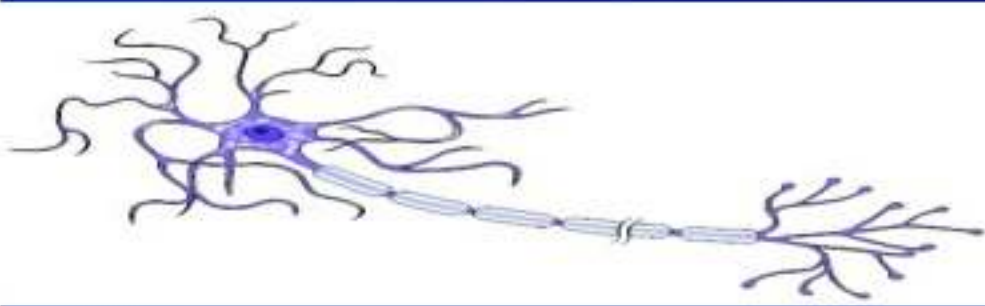
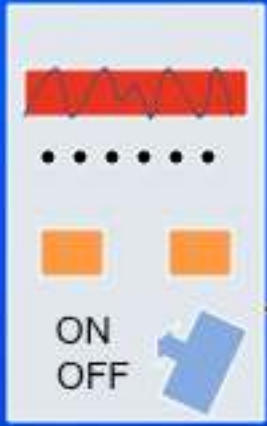
# The Nervous System: 101



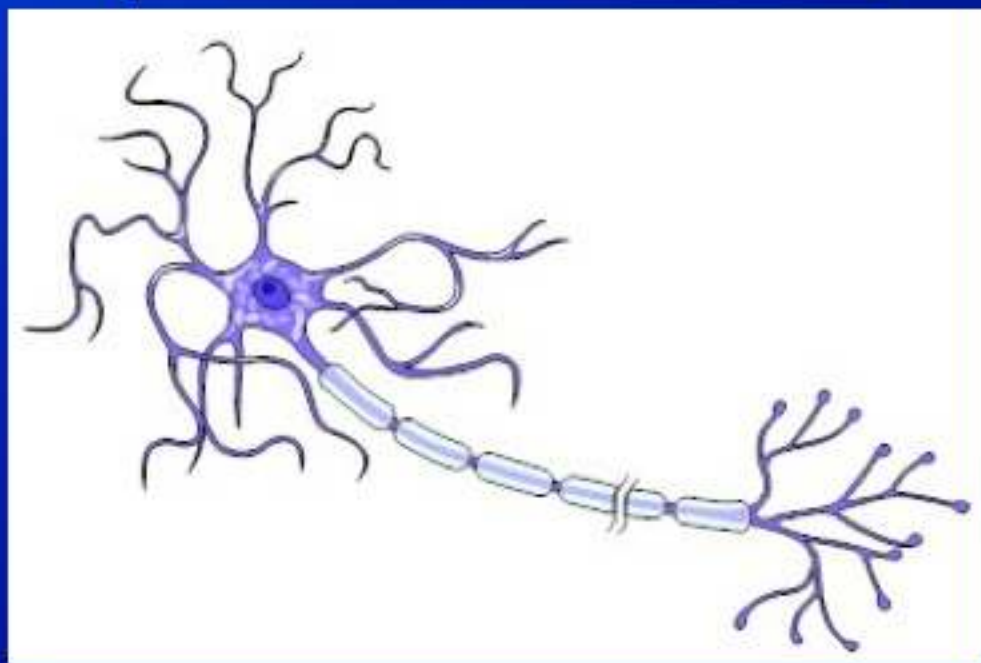


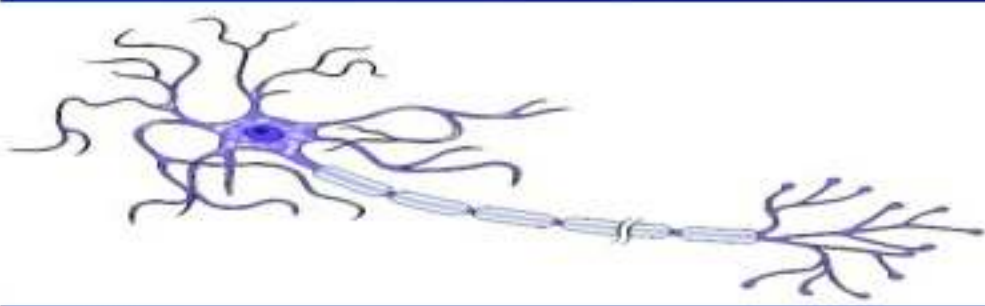
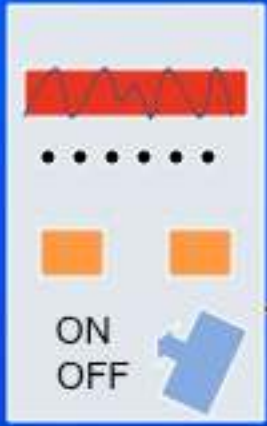




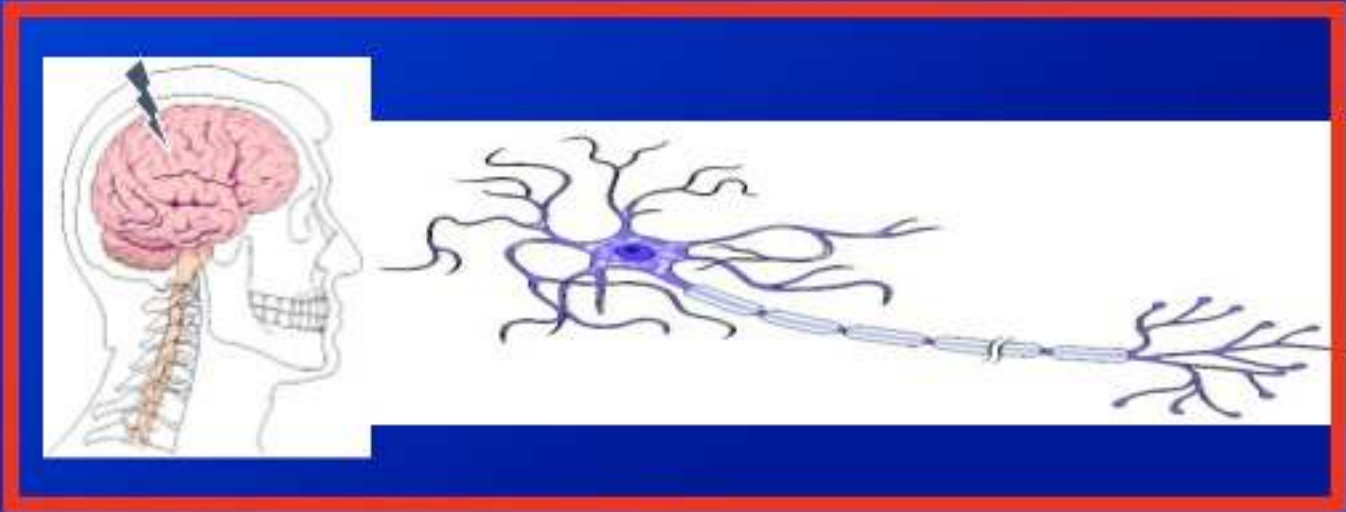












**How Does Your Stereo Get  
Damaged?**

